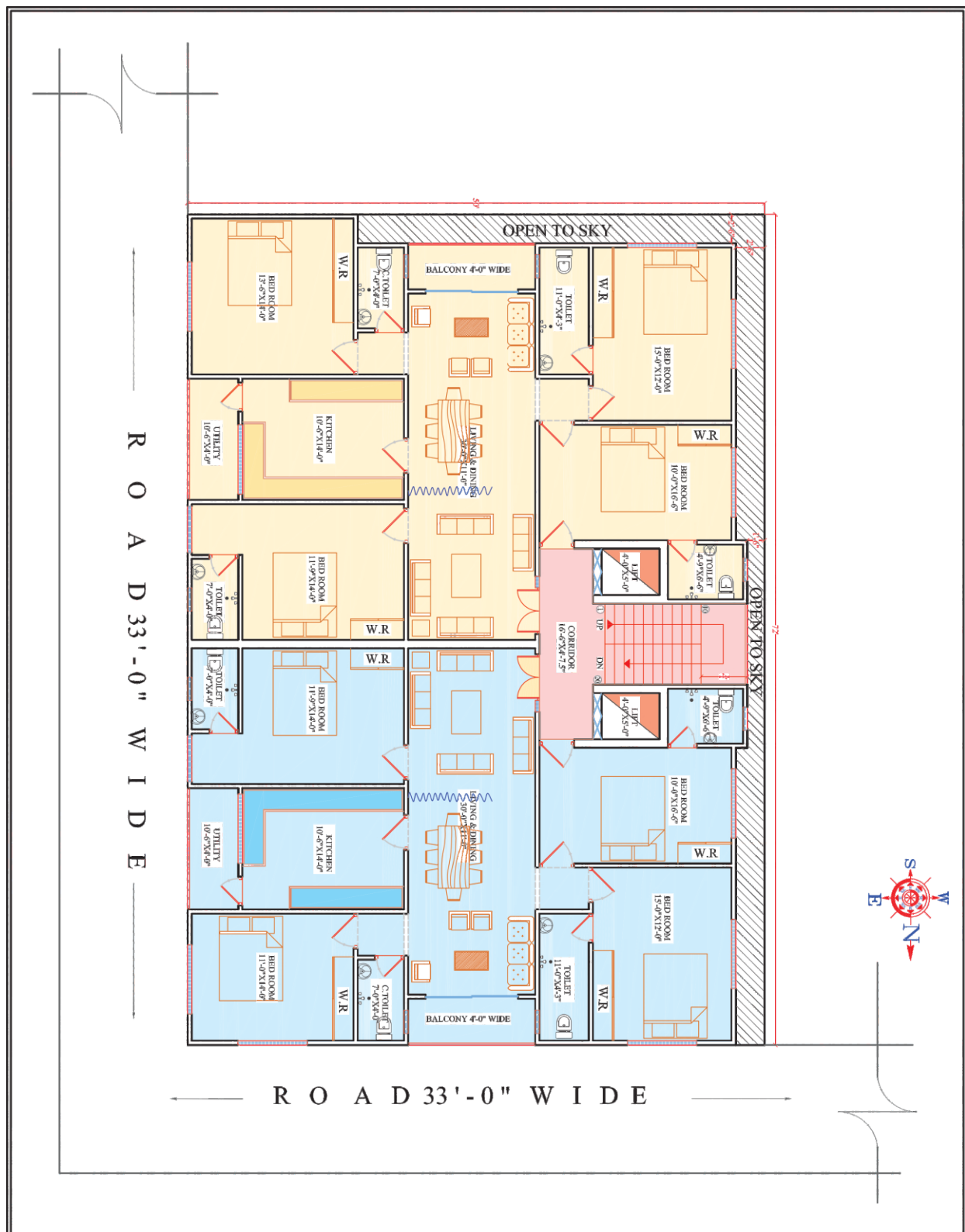


Open The Doors to a Luxurious Life Style



SHEZU PARADISE APARTMENTS

TYPICAL FLOOR PLAN



Area Statement 3BHK Deluxe Flats

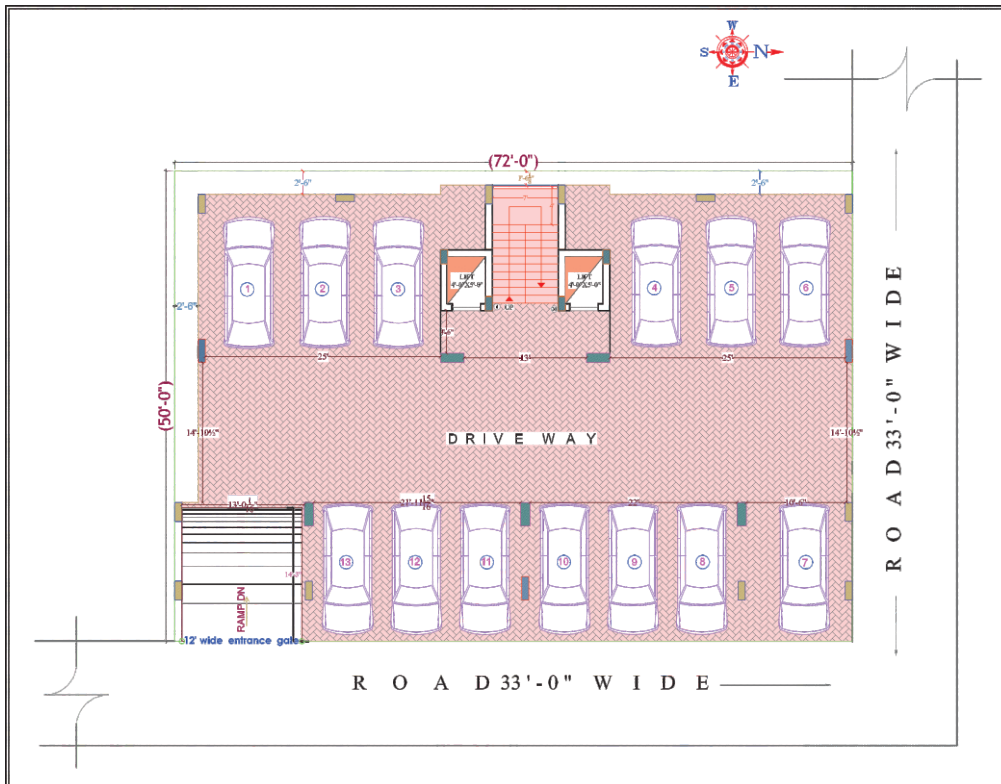
Flat No. 1, 1360 Sft

Flat No. 2, 1360 Sft

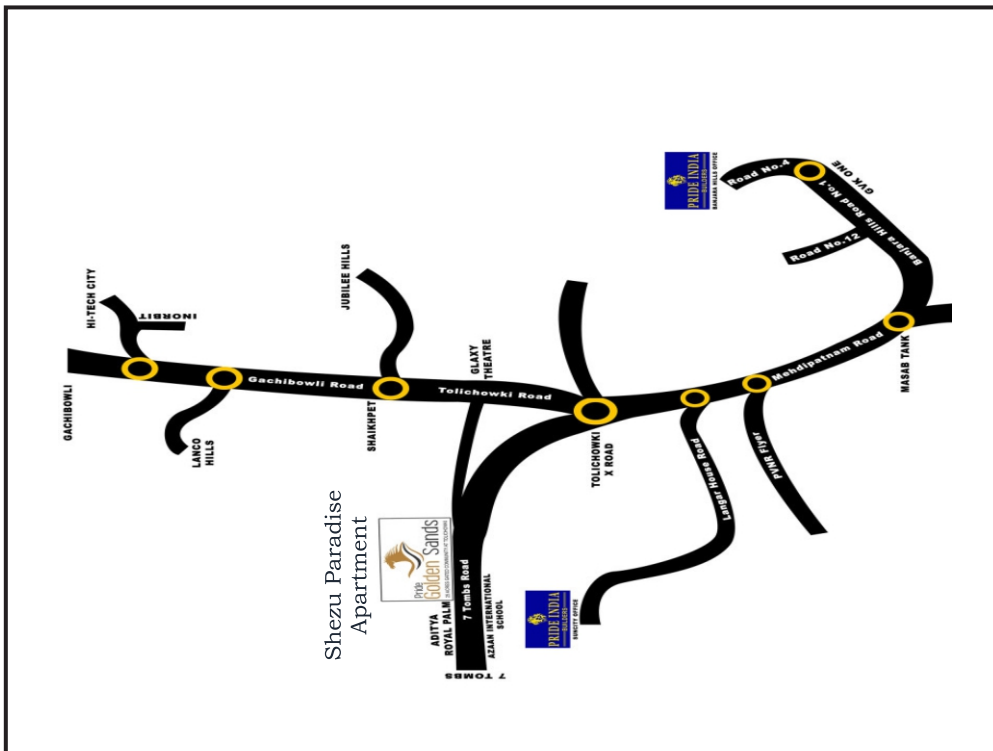
SPECIFICATIONS

- Structure : Rcc Frames Structures will be as per the Provided Design in using TMT-550 Steel
- Walls : Best Quality Fly ash Bricks
- Plastering : External & Internal Plastering with C.M in two Coats with sponge finishing
- Flooring : First Class Vitrified Tiles 24" X 24" with Skirting
- Bathrooms : Each Toilet Ceramic Tiles Flooring Designer Cermic Tiles Dado up to Door Height European / Indian type water closet. Provisen for Geyser will be Given
- Doors : Main Door Teakwood Frame and Teakwood Shutter with Polish
Internal Doors Frames Teakwood with Molding Doors
- Windows : 3 Trach Aluminum Frames With Iron Safety Grills
- Kitchen : Granite Plate form with Satin less Steel Sink
- Painting : Two Coats Birla putty with Acrylic Plastic Emulsion
- Lift : Two 6 Passenger Standard Lift
- Back Up : Generator Backup for Lift & Common Lights
- Note : Car Parking & Amnesties Extra Cost, 24X7 CCTV and Many More Facilities
- Facing : North & East Facing Flats

PARKING PLAN



LOCATION MAP



Our Previous Projects at : Ramkoti | Bhadurpura | Saleem Nagar
Tolichowki, Golden Sand Colony

Q MAKS BUILDERS & DEVELOPERS

Plot No. F1, Golden Sand Colony, Tolichowki, Hyderabad

Contact : 9959718786 / 9700512786